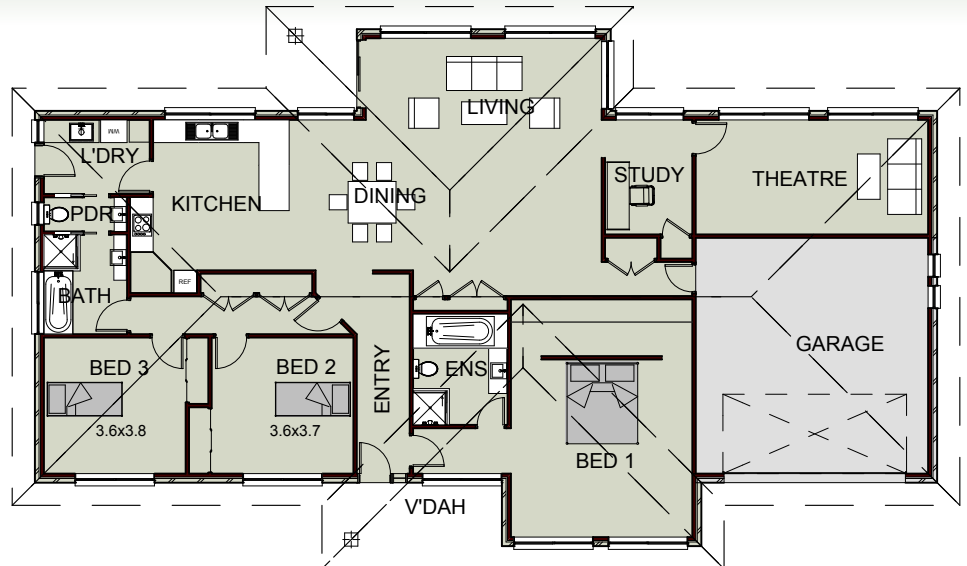




STANDARD SPECIFICATION

LIVING AREA	216.96sqm	23.35SQ
GARAGE AREA	41.4sqm	4.4SQ
V'DAH/ALFRESCO	10.88sqm	1.17SQ
TOTAL AREA	269.24sqm	28.92SQ



LOGICAL HOMES

PO BOX 79
 WARRAGUL 3820
 Ph 0416018799
 Ph/Fax 56281331
 email-brad@logicalhomes.net.au
 logicalhomes.net.au